

Models:

- 57920** – 4" x 4-5/16" Thin, Vinyl Pad
- 57922** – 5" Dia. Thick, Vinyl Pad
- 57923** – 4-1/4" x 4-1/2" Thick, Hook Pad
- 57924** – 5" Dia. Thick, Hook Pad
- 57925** – 4-1/4" x 4-1/2" Thick, Vinyl Pad
- 57926** – 6" Dia. Thick, Vinyl Pad
- 57927** – 6" Dia. Thick, Hook Pad

Dynabug "Model T" Sander

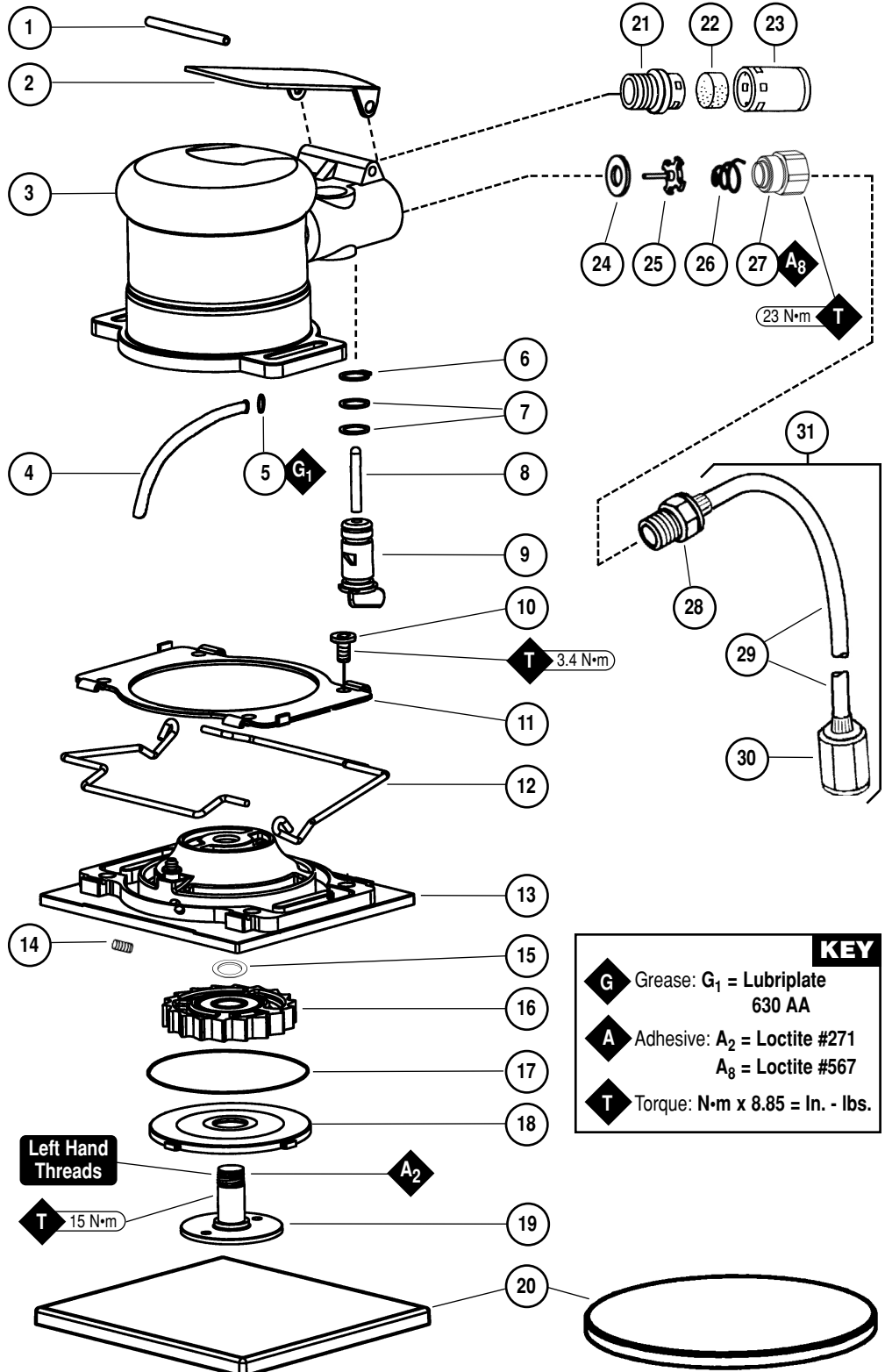
Air Motor and Machine Parts

! WARNING

Always operate, inspect and maintain this tool in accordance with the Safety Code for portable air tools (ANSI B186.1) and any other applicable safety codes and regulations. Please refer to Dynabrade's Warning/Safety Operating Instructions for more complete safety information.

Index Key

No.	Part #	Description
1	95979	Pin
2	57986	Lever
3	57921	Housing - 57920
	57963	Housing - 57922
	57964	Housing - 57923
	57967	Housing - 57924
	57941	Housing - 57925
	57911	Housing - 57926
	57912	Housing - 57927
4	57988	Inlet Hose Assembly
5	12156	O-Ring
6	95697	Snap Ring
7	01025	O-Ring (2)
8	01477	Valve Stem
9	57064	Speed Regulator
10	95405	Button Head Screw (4)
11	57982	Clip Retainer
12	57980	Spring Clip (2) (Used On Model-57920 Only)
13	57987	Square Base Plate Assy.
	57997	Round Base Plate Assy.
14	96493	Set Screw
15	58092	Spacer
16	57981	Turbine Wheel Assembly
17	97121	O-Ring
18	57983	Base Plate Door
19	57979	Motor Shaft
20	57999	Vinyl Pad - 57920
	56249	Vinyl Pad - 57922
	57998	Hook Pad - 57923
	56248	Hook Pad - 57924
	56244	Vinyl Pad - 57925
	56269	Vinyl Pad - 57926
	56268	Hook Pad - 57927
21	57066	Muffler Body
22	56027	Muffler Insert
23	56028	Muffler Cap
24	01464	Seal
25	01472	Tip Valve
26	01468	Spring
27	01494	Inlet Bushing
28	96457	Male Hose Adapter
29	96458	Hose
30	96456	Female Hose Adapter
31	96455	Hose Assembly



Important Operating, Maintenance and Safety Instructions

Carefully read all instructions before operating or servicing any Dynabrade® Abrasive Power Tool.

Warning: Hand, wrist and arm injury may result from repetitive work motion and overexposure to vibration.

Important: Turbine air motor, no oil required.

Operating Instructions:

Warning: Eye, face, sound, respiratory and body protection must be worn while operating power tools. Failure to do so may result in serious injury or death. Follow safety procedures posted in workplace.

1. With power source disconnected from tool, securely fasten abrasive/accessory on tool.
2. Install air fitting into inlet bushing of tool. **Important:** Secure inlet bushing of tool with a wrench before attempting to install the air fitting to avoid damaging valve body housing.
3. Connect power source to tool. Be careful not to depress throttle lever in the process.

Maintenance Instructions:

1. Check tool speed regularly with a tachometer. If tool is operating at a higher speed than the RPM marked on the tool, the tool should be serviced to correct the cause before use.
2. Some silencers on air tools may clog with use. Clean and replace as required.
3. An Air Line Filter-Regulator must be used with this air tool to maintain all warranties. Dynabrade recommends the following: **11402** Air Line Filter-Regulator – Provides accurate air pressure regulation, two-stage filtration of water contaminants. Operates 40 SCFM @ 100 PSIG and has 3/8" NPT female ports.
4. Use only genuine Dynabrade replacement parts. To reorder replacement parts, specify the **Model #, Serial #, and RPM** of your machine.
5. A Motor Tune-Up Kit (P/N **96169**) is available which includes assorted parts to help maintain motor in peak operating condition. Please refer to Dynabrade's Preventative Maintenance Schedule for a guide to expectant life of component parts.
6. Mineral spirits are recommended when cleaning the tool and parts. Do not clean tool or parts with any solvents or oils containing acids, esters, ketones, chlorinated hydrocarbons or nitro carbons.

Safety Instructions:

Products offered by Dynabrade should not be converted or otherwise altered from original design without expressed written consent from Dynabrade, Inc.



- **Important:** User of tool is responsible for following accepted safety codes such as those published by the American National Standards Institute (ANSI).
- Always disconnect power supply before changing abrasive/accessory or making machine adjustments.
- Inspect abrasives/accessories for damage or defects prior to installation on tools.
- Please refer to Dynabrade's Warning/Safety Operating Instructions Tag (Reorder No. **95903**) for more complete safety information.

Notice

All Dynabrade motors use the highest quality parts and metals available and are machined to exacting tolerances. The failure of quality pneumatic motors can most often be traced to an unclean air supply or the lack of lubrication. Air pressure easily forces dirt or water contained in the air supply into motor bearings causing early failure. It often scores the cylinder walls and the rotor blades resulting in limited efficiency and power. Our warranty obligation is contingent upon proper use of our tools and cannot apply to equipment which has been subjected to misuse such as unclean air, wet air or a lack of lubrication during the use of this tool.

One Year Warranty

Following the reasonable assumption that any inherent defect which might prevail in a product will become apparent to the user within one year from the date of purchase, all equipment of our manufacture is warranted against defects in workmanship and materials under normal use and service. We shall repair or replace at our factory, any equipment or part thereof which shall, within one year after delivery to the original purchaser, indicate upon our examination to have been defective. Our obligation is contingent upon proper use of Dynabrade tools in accordance with factory recommendations, instructions and safety practices. It shall not apply to equipment which has been subject to misuse, negligence, accident or tampering in any way so as to affect its normal performance. Normally wearable parts such as bearings, contact wheels, rotor blades, etc., are not covered under this warranty.

Motor Assembly/Disassembly Instructions – “Model T” Dynabug

Important: Manufacturers warranty is void if tool is disassembled before warranty expires.

A complete Repair Kit, part number **96169**, is available which includes special tools for correct disassembly/assembly of tool.

To Disassemble

1. Disconnect tool from power source.
2. Unhook **57980** Spring Clips and remove sanding pad (if necessary).
3. Unscrew **95405** Button Head Screws (4).
4. Remove **57980** Spring Clips (if equipped) and lift **57982** Clip Retainer up about 1/2", to expose **57987** or **57997** Base Plate Assembly.
5. Remove **57988** Hose from **57987** or **57997** Base Plate Assembly.
6. Disassemble housing assembly from base plate assembly, by pulling apart.
7. Invert assembly and insert adjustable pin spanner wrench or **50971** Lock Ring Wrench to **57979** Motor Shaft, and remove (left-hand threads).
8. Remove **58092** Spacer from motor shaft. **Note:** Spacer orientation on motor shaft.
9. Remove **57981** Turbine Wheel Assembly. **Note:** Turbine orientation of wheel assembly on motor shaft.

To Assemble:

Important: Be certain parts are clean and in good repair before assembling.

1. Slide **57983** Base Plate Door onto **57979** Motor Shaft.
2. Replace **57981** Turbine Wheel Assembly on motor shaft using the same orientation as when it was disassembled.
3. Replace **58092** Spacer on motor shaft using the same orientation as when motor was disassembled.
4. Install **97121** O-Ring onto base plate assembly.
5. Apply a slight amount of #271 Loctite® (or equivalent) to threads of **57979** Motor Shaft and install onto base plate assembly, torque 15 N•m/133 in. - lbs.
6. Install **57988** Inlet Hose assembly into housing. Apply some grease to **12156** O-Ring and install.
Note: Speed regulator should be installed at this time. Slide other end of tube over barb fitting in base plate.
7. Install housing assembly onto base plate assembly.
8. Install **57980** Spring Clips onto base plate assembly (if necessary).
9. Slide **57982** Clip Retainer down onto **57987** or **57997** Base Plate Assembly and install **95405** Button Head Screws (4), torque 3.4 N•m/20 in. - lbs.

Tool Assembly Complete. Please allow 30 minutes for adhesives to cure before operating tool.

Valve and Speed Regulator Assemblies:

1. Secure housing in vice using **57092** Collar or padded jaws.
2. Remove inlet bushing, **01468** Spring, **01472** Tip Valve and **01464** Seal from housing.
3. Remove **95697** Snap Ring. Push the speed regulator and valve stem out of the housing. Remove the **01025** O-Rings (2).
4. Place new **01025** O-Rings (2) on the speed regulator and place in housing with valve stem. Install new **95697** Snap Ring.
5. Place new **01464** Seal in housing, Using tweezers or needle nose pliers, place the tip valve into housing so that the pin goes through the hole in the valve stem. Place new **01468** Spring into housing so small end is towards tip valve.
6. Spread 1 drop of #567 Loctite® (or equivalent) around the threads of the inlet bushing and tighten into housing to 23 N•m/200 in. - lbs.

Note: This tool is an oil-free Dynabrade Tool. Therefore no air lube should be placed into the tool. Operate the machine for approximately 30 seconds before application to workpiece to determine if machine is working properly and safely.

Loctite® is a registered trademark of the Loctite Corp.

Machine Specifications

Model Number	Motor HP (W)	Motor RPM	Sound Level	Air Flow Rate CFM/SCFM (LPM)	Air Pressure PSIG (Bars)	Air Inlet Thread	Weight Pound (kg)	Length Inch (mm)	Height Inch (mm)
57920	N/A	20,000	83 dB(A)	1/9 (255)	90 (6.2)	1/4" NPT	1 (.45)	5 (127)	3 (76)
57922	N/A	20,000	83 dB(A)	1/9 (255)	90 (6.2)	1/4" NPT	1 (.45)	5 (127)	3 (76)
57923	N/A	20,000	72 dB(A)	1/9 (255)	90 (6.2)	1/4" NPT	1 (.5)	5 (127)	3 (76)
57924	N/A	20,000	72 dB(A)	1/9 (255)	90 (6.2)	1/4" NPT	1 (.5)	5 (127)	3 (76)
57925	N/A	20,000	83 dB(A)	1/9 (255)	90 (6.2)	1/4" NPT	1 (.45)	5 (127)	3 (76)
57926	N/A	20,000	72 dB(A)	1/9 (255)	90 (6.2)	1/4" NPT	1 (.5)	5 (127)	3 (76)
57927	N/A	20,000	72 dB(A)	1/9 (255)	90 (6.2)	1/4" NPT	1 (.5)	5 (127)	3 (76)

Additional Specifications: Hose I.D. Size 1/4" (8 mm)

Optional Accessories

Coated Abrasive Sheets & Discs For Dynabug "Model T" Finishing Sanders

5" (127mm) Diameter PSA & Hook-Face Discs

Aluminum Oxide Discs / Reattachable

Abrasive Grit			125 Discs = Unit.
36	40	60	
93311	93312	93313	

Premium Aluminum Oxide Discs / PSA Mounted

Abrasive Grit					
80	100	120	150	180	220
93101	93102	93103	93104	93105	93106

120 Grit & Coarser – 125/Roll; 10 Rolls = Unit. 150 Grit & Finer – 175/Roll; 6 Rolls = Unit. Complete rolls only. **Note:** Other grits available upon request.

Silicon Carbide Discs / PSA Mounted

Abrasive Grit					
80	100	120	150	180	220
93051	93052	93053	93054	93055	93056

120 Grit & Coarser – 125/Roll; 8 Rolls = Unit. 150 Grit & Finer – 250/Roll; 4 Rolls = Unit. Complete rolls only. **Note:** Other grits available upon request.

6" (152mm) Diameter PSA & Hook-Face Discs

Premium Aluminum Oxide Discs / PSA Mounted

Abrasive Grit					
80	100	120	150	180	220
93209	93200	93201	93202	93203	93204

120 Grit & Coarser – 125/Roll; 10 Rolls = Unit. 150 Grit & Finer – 175/Roll; 6 Rolls = Unit. Complete rolls only. **Note:** Other grits available upon request.

Silicon Carbide Discs / PSA Mounted

Abrasive Grit					
80	100	120	150	180	220
93069	93070	93071	93072	93073	93074

120 Grit & Coarser – 125/Roll; 8 Rolls = Unit. 150 Grit & Finer – 250/Roll; 4 Rolls = Unit. Complete rolls only. **Note:** Other grits available upon request.

Reattachable & Non-Adhesive Abrasive Sheets

Coated Aluminum Oxide Sheet Abrasives

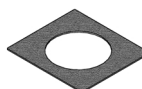
Sheet Size	Description	Abrasive Grit			
		80	120	180	320
4-1/2" (114mm) x 4-1/4" (108mm)	PSA w/Liner	93840	93841	93842	93843
4-1/2" (114mm) x 4-1/4" (108mm)	Hook-Face	93850	93851	93852	93853
4-1/2" (114mm) x 5-1/2" (140mm)	No Adhesive	93854	93855	93856	93857

Unit = 100 Sheets



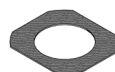
96169 Motor Tune-Up Kit

- Includes assorted parts to help maintain and repair motor.



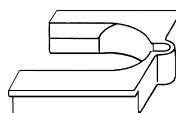
98846 Hook-Face Backing

- A replacement Hook-Face Backing for 57978 Square Base Plate.



98848 Hook-Face Backing

- A replacement Hook-Face Backing for 57943 Round Base Plate.



57092 Repair Collar

- Specially designed collar for use in vise to prevent damage to motor housing during disassembly/assembly.



50971 Lock Ring Tool

- Lock Ring Tool has a 3/8 in. square socket for use with 3/8 in. drive; breaker bar, ratchet head, or torque wrenches.

Visit Our Web Site: www.dynabrade.com

Email: Customer.Service@Dynabrade.com



DYNABRADE, INC., 8989 Sheridan Drive • Clarence, NY 14031-1490 • Phone: (716) 631-0100 • Fax: 716-631-2073 • International Fax: 716-631-2524
DYNABRADE EUROPE S.à.r.l., Zone Artisanale • L-5485 Wormeldange—Haut, Luxembourg • Telephone: 352 76 84 94 1 • Fax: 352 76 84 95 1

© DYNABRADE, INC., 2003

PRINTED IN USA