

## Safety, Operation and Maintenance – Save This Document and Educate All Personnel

Model	RPM	Vacuum	Orbit	Pad Size	Pad Type
57800	8,000	Non-Vacuum	3/16"	3-2/3" x 7"	Vinyl-Face
57801	8,000	Self-Generated	3/16"	3-2/3" x 7"	Vinyl-Face
57804	8,000	Central Vacuum	3/16"	3-2/3" x 7"	Vinyl-Face
57810	10,000	Non-Vacuum	3/32"	3-2/3" x 7"	Vinyl-Face
57811	10,000	Self-Generated	3/32"	3-2/3" x 7"	Vinyl-Face
57814	10,000	Central Vacuum	3/32"	3-2/3" x 7"	Vinyl-Face



Model 57800

**SANDER**

LIMITED  
LIFETIME  
WARRANTY

Find The Most Current Offering of Support Documents and Accessories at [www.Dynabrade.com](http://www.Dynabrade.com)

## ⚠ WARNING

Read and understand this tool manual before operating your air tool. Follow all safety rules for the protection of operating personnel as well as adjacent areas. Always operate, inspect and maintain this tool in accordance with the American National Standards Institute (ANSI). Safety Requirements for the Use, Care and Protection of Abrasive Wheels – ANSI B7.1, Compressed Air and Gas Institute (CAGI) Safety Code for Portable Air Tools – CAGI B186.1, Code of Federal Regulation – CFR 29 Part 1910, International Organization for Standardization (ISO) Hand Held Non-Electric Power Tools – ISO 11148, Safety Requirements and applicable State and Local Regulations.



Read and understand tool manual before work starts to reduce risk of injury to operator, visitors, and tool.



Eye protection must be worn at all times, eye protection to conform to ANSI Z87.1.



Ear protection to be worn when exposure to sound, exceeds the limits of applicable Federal, State or local statutes, ordinances and/or regulations.



Practice safety requirements. Work alert, have proper attire, and do not operate tools under the influence of alcohol or drugs.



Respiratory protection to be used when exposed to contaminants that exceed the applicable threshold limit values required by law.



Air line hazard, pressurized supply lines and flexible hoses can cause serious injury. Do not use damaged, frayed or deteriorated air hoses and fittings.

Some dust created by sanding, grinding, drilling, and other construction activities contain chemicals known to cause cancer, birth defects or other reproductive harm. Some examples of these chemicals are:

- Lead from lead-based paints
- Crystalline silica from bricks and cement and other masonry products
- Arsenic and chromium from chemically treated lumber

Your risk from these exposures varies, depending on how often you do this type of work. To reduce your exposure to these chemicals: work in a well ventilated area, and work with approved safety equipment, such as those dust masks that are specially designed to filter out microscopic particles.

## SAFETY and OPERATING INSTRUCTIONS



Carefully Read and Understand the General and Sander sections found in Tool Safety and Operating Guidelines (PN00001676) Before Handling or Using Tool.

Carefully Read all instructions before operating or servicing any Dynabrade® Abrasive Power Tool. Products offered by Dynabrade are not to be modified, converted or otherwise altered from the original design.

**Tool Intent:** Dynabug® sanders are used for sanding and finishing a variety of materials including wood, metal, plastic, fiberglass, solid surfaces, composites, rubber, glass and stone.

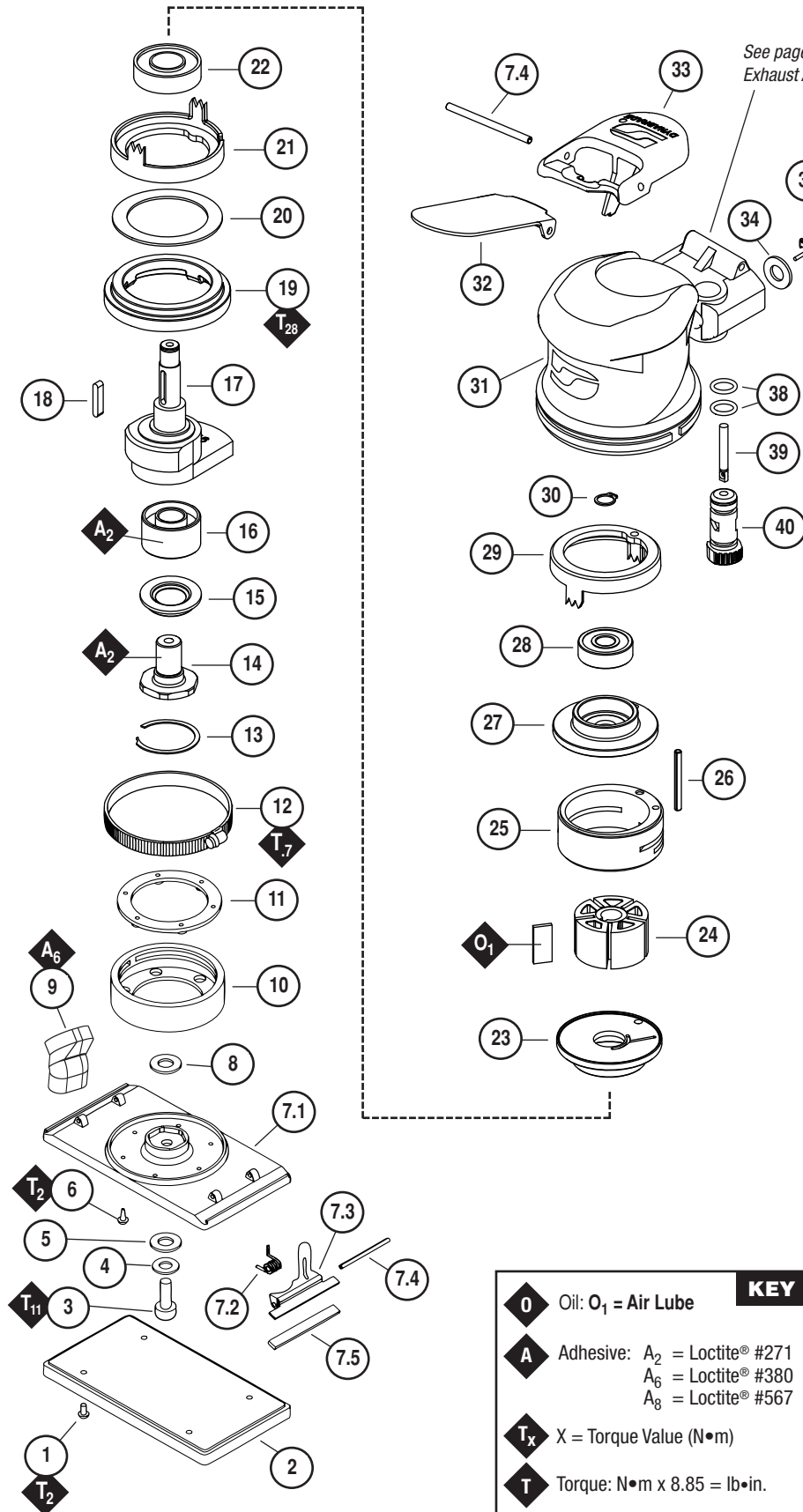
**DO NOT USE Tool for Anything Other Than Its Intended Applications.**

**Training:** Proper care, maintenance, and storage of your air tool will maximize tools performance and reduce chance for accident.

**Employer's Responsibility:** Provide operators with safety instructions and training for safe use of tools and accessories.

**Report to Your Supervisor any Condition of the Tool, Accessories or Operation you Consider Unsafe.**





**Speed Regulator Flow Control**  
 (Item 40)

↻

+      -

**Maximum Flow**  
 Turn Clockwise

**Minimum Flow**  
 Turn Counter-clockwise

ITEM	P/N	DESCRIPTION	QTY.
1	96258	SCREW	4
2	See Pg 4	PAD	1
3	96168	SCREW	1
4	95183	WASHER	1
5	57838	WASHER	1
6	96114	SCREW	6
7	57841	PAD TOP ASSEMBLY	1
7.1	57825	PAD TOP	1
7.2	57840	CLIP SPRING	2
7.3	57826	CLIP	2
7.4	94590	PIN	3
7.5	57834	RUBBER GRIP	2
8	57837	WASHER	1
9	57842	VACUUM TUBE (VAC MDLS)	1
10	57822	BOOT	1
11	57823	PAD MOUNT	1
12	96116	CLAMP	1
13	95630	SNAP RING	1
14	57069	BALANCER SHAFT	1
15	59084	V-SEAL	1
16	56052	BALANCER BEARING	1
17	57833 57839	BALANCER SHAFT - 3/16" ORBIT BALANCER SHAFT - 3/32" ORBIT	1
18	56047	KEY	1
19	57059	LOCK RING	1
20	95973	WASHER	1
21	57055	FRONT RING	1
22	57088	BEARING	1
23	57057	FRONT BEARING PLATE	1
24	57113	ROTOR/VANE SET	1
25	57058	CYLINDER ASSEMBLY (INC. 95971 PIN)	1
26	95971	PIN	1
27	57056	REAR BEARING PLATE	1
28	01206	BEARING	1
29	57054	REAR RING	1
30	95626	RETAINING RING	1
31	See Pg 4	HOUSING	1
32	56846 56847	THROTTLE LEVER - 3/16" ORBIT THROTTLE LEVER - 3/32" ORBIT	1
33	57041	COMFORT PLATFORM	1
34	01464	SEAL	1
35	01472	TIP VALVE	1
36	01468	SPRING	1
37	01494	INLET BUSHING	1
38	01025	O-RING	2
39	01477	VALVE STEM	1
40	57064	SPEED REGULATOR	1

**KEY**

**O** Oil; **O<sub>1</sub>** = Air Lube

**A** Adhesive: **A<sub>2</sub>** = Loctite® #271  
**A<sub>6</sub>** = Loctite® #380  
**A<sub>8</sub>** = Loctite® #567

**T<sub>x</sub>** X = Torque Value (N•m)

**T** Torque: N•m x 8.85 = lb•in.

Always follow adhesive manufacturers cleaning and priming recommendations.

# LIMITED LIFETIME WARRANTY

To validate Dynabrade Limited Lifetime Warranty, you must register each tool at: [www.dynabrade.com](http://www.dynabrade.com). Registration of each tool at website is required. Dynabrade will not honor Limited Lifetime Warranty on unregistered tools. Please view the entire Limited Lifetime Warranty Policy at : [www.dynabrade.com](http://www.dynabrade.com).

**LIMITED  
LIFETIME  
WARRANTY**

## MACHINE SPECIFICATIONS

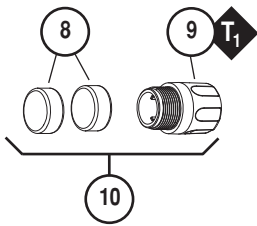
Model	Speed	Power	Sound	Air Consumption	Pad Size	Weight	Length	Height
57800	8,000 RPM	.24 hp (179 W)	79 db(A)	16 SCFM (453 LPM)	3-2/3" x 7"	2.8 lb. (1.3 kg)	7.3" (184 mm)	4.3" (108 mm)
57801	8,000 RPM	.24 hp (179 W)	76 db(A)	16 SCFM (453 LPM)	3-2/3" x 7"	2.8 lb. (1.3 kg)	7.3" (184 mm)	4.3" (108 mm)
57804	8,000 RPM	.24 hp (179 W)	80 db(A)	16 SCFM (453 LPM)	3-2/3" x 7"	2.8 lb. (1.3 kg)	7.3" (184 mm)	4.3" (108 mm)
57810	10,000 RPM	.28 hp (209 W)	77 db(A)	18 SCFM (510 LPM)	3-2/3" x 7"	2.8 lb. (1.3 kg)	7.3" (184 mm)	4.3" (108 mm)
57811	10,000 RPM	.28 hp (209 W)	74 db(A)	18 SCFM (510 LPM)	3-2/3" x 7"	2.8 lb. (1.3 kg)	7.3" (184 mm)	4.3" (108 mm)
57814	10,000 RPM	.28 hp (209 W)	81 db(A)	18 SCFM (510 LPM)	3-2/3" x 7"	2.8 lb. (1.3 kg)	7.3" (184 mm)	4.3" (108 mm)

Additional Specifications: Air Inlet Thread 1/4" NPT • Hose I.D. 1/4" (6 mm)

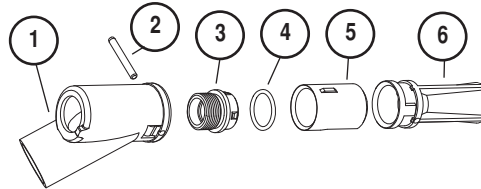
Sound Level is the pressure measurement according to the method outlined in ISO regulation ISO-15744

## MACHINE EXHAUST ASSEMBLIES

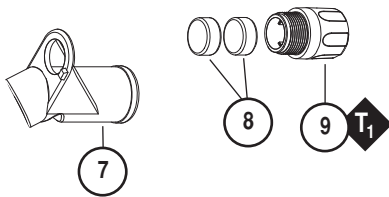
### Non-Vacuum



### Self-Generated Vacuum



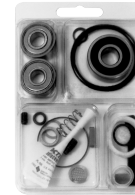
### Central Vacuum



ITEM	P/N	DESCRIPTION	QTY.
1	57083	VACUUM ADAPTER	1
2	96197	DOWEL PIN	1
3	57066	MUFFLER BODY	1
4	95526	O-RING	1
5	69353	VAC NOZZLE	1
6	57067	VAC TUBE	1
7	57093	CENTRAL VACUUM ADAPTER	1
8	56027	MUFFLER INSERT	2*
9	69359	MUFFLER BODY	1
10	69272	MUFFLER ASSEMBLY	1

\*10,000 RPM requires 2 Inserts and 8,000 RPM requires 3.  
Optional: 30 quantity Muffler Insert available, P/N 56054

## OPTIONAL ACCESSORIES



### Motor Tune-Up Kit

- Includes assorted parts to help maintain and repair motor.

Part No. 96024



### Dynabrade Air Lube

- Absorbs up to 10% of its weight in water.
- Prevents rust and the formation of sludge.

Part No. 95821: 4 oz.

Part No. 95842: 1 pt.



### Dynaswivel®

- Composite construction.
- 1/4" NPT.

Part No. 94300



### Male Plug

- Provides up to twice the air flow compared to standard plug design.
- Plug has "ported" design to prevent "starving" of the air tool.

Part No. 95675

## SANDING PADS

Part No.	Description
57850	Non-Vacuum, Vinyl-Face
57851	Non-Vacuum, Hook-Face
57852	Non- Vacuum, Hook-Face (Long Nap)
57855	Vacuum, Vinyl-Face
57856	Vacuum, Hook-Face

## REPLACEMENT HOUSINGS

Model No.	Housing No.
57800	57880
57801	57881
57804	57884
57810	57882
57811	57883
57812	57886

## REFERENCE CONTACT INFORMATION

### American National Standards Institute (ANSI)

1899 L Street, NW, 11th Floor • Washington, DC 20036  
Tel: 1 (202) 293-8020

### Compressed Air & Gas Institute (CAGI)

1300 Sumner Ave. • Cleveland, OH 44115-2851  
Tel: 1 (216) 241-7333 • Fax: (216) 241-0105

### Government Printing Office (GPO)

Superintendent of Documents • Attn: New Orders  
P.O. Box 371954 • Pittsburgh, PA 15250-7954 • Tel: 1 (202) 512-1803

### International Organization of Standards (ISO)

Case postale 56 • CH-1211 Geneva 20  
Tel: + 41 22 749 01 11 • Fax: + 41 22 749 09 47

## DYNABRADE, INC.

8989 Sheridan Drive • Clarence, NY 14031-1419 • Phone: (716) 631-0100 • Fax: 716-631-2073 • International Fax: 716-631-2524  
©DYNABRADE, INC., 2023 PRINTED IN USA

[www.dynabrade.com](http://www.dynabrade.com)



PD13.11R\_02/23